



**INTERCONNECTION
FACILITIES STUDY
REPORT**

GEN-2017-164

Published April 2023

By SPP Generator Interconnections Dept.

REVISION HISTORY

| DATE OR VERSION NUMBER | AUTHOR | CHANGE DESCRIPTION |
|------------------------|--------|---|
| 04/12/2023 | SPP | Initial draft report issued. |
| 05/02/2023 | SPP | Updated upgrade information and cost for UIDs 156445 & 156471 in Table 3. |
| | | |

CONTENTS

| | |
|---|---|
| Revision History | i |
| Summary | 1 |
| Introduction | 1 |
| Phase(s) of Interconnection Service | 1 |
| Compensation for Amounts Advanced for Network Upgrade(s)..... | 1 |
| Interconnection Customer Interconnection Facilities | 2 |
| Transmission Owner Interconnection Facilities and Non-Shared Network Upgrade(s)..... | 3 |
| Shared Network Upgrade(s) | 4 |
| Contingent Network Upgrade(s)..... | 5 |
| Affected System Upgrade(s) | 6 |
| Conclusion..... | 7 |
| Appendices | 8 |
| A: Transmission Owner’s Interconnection Facilities Study Report and Network Upgrades Report(s)..... | 1 |

SUMMARY

INTRODUCTION

This Interconnection Facilities Study (IFS) for Interconnection Request is for a 250 MW generating facility located in Garfield County, OK. The Interconnection Request was studied in the DISIS-2017-002 Impact Study for ERIS. The Interconnection Customer's requested in-service date is December 30, 2025.

The interconnecting Transmission Owner, Oklahoma Gas & Electric Company (OGE), performed a detailed IFS at the request of SPP. The full report is included in Appendix A. SPP has determined that full Interconnection Service will be available after the assigned Transmission Owner Interconnection Facilities (TOIF), Non-Shared Network Upgrades, Shared Network Upgrades, Contingent Network Upgrades, and Affected System Upgrades that are required for full interconnection service are completed.

The primary objective of the IFS is to identify necessary Transmission Owner Interconnection Facilities, Network Upgrades, other direct assigned upgrades, cost estimates, and associated upgrade lead times needed to grant the requested Interconnection Service.

PHASE(S) OF INTERCONNECTION SERVICE

It is not expected that Interconnection Service will occur in phases. However, full Interconnection Service will not be available until all Interconnection Facilities and Network Upgrade(s) can be placed in service.

COMPENSATION FOR AMOUNTS ADVANCED FOR NETWORK UPGRADE(S)

FERC Order ER20-1687-000 eliminated the use of Attachment Z2 revenue crediting as an option for compensation. The Incremental Long Term Congestion Right (ILTCR) process will be the sole process to compensate upgrade sponsors as of July 1st, 2020.

INTERCONNECTION CUSTOMER INTERCONNECTION FACILITIES

The Generating Facility is proposed to consist of (139) General Electric PV 0.90 MW/1.0 MVA inverters for a total generating nameplate capacity of 250 MW.

The Interconnection Customer's Interconnection Facilities to be designed, procured, constructed, installed, maintained, and owned by the Interconnection Customer at its sole expense include:

34.5 kV underground cable collection circuits;

34.5 kV to 345 kV transformation substation with associated 34.5 kV and 345 kV switchgear;

One 345/34.5 kV 168/224/280 MVA (ONAN/ONAF/ONAF) step-up transformer to be owned and maintained by the Interconnection Customer at the Interconnection Customer's substation;

Approx. 13 mile 345 kV line to connect the Interconnection Customer's substation to the Point of Interconnection ("POI") at the 345 kV bus at existing Transmission Owner substation ("Woodring 345kV Substation") that is owned and maintained by Transmission Owner;

All transmission facilities required to connect the Interconnection Customer's substation to the POI;

Equipment at the Interconnection Customer's substation necessary to maintain a composite power delivery at continuous rated power output at the high-side of the generator substation at a power factor within the range of 95% lagging and 95% leading in accordance with Federal Energy Regulatory Commission (FERC) Order 827. The Interconnection Customer may use inverter manufacturing options for providing reactive power under no/reduced generation conditions. The Interconnection Customer will be required to provide documentation and design specifications demonstrating how the requirements are met; and,

All necessary relay, protection, control and communication systems required to protect Interconnection Customer's Interconnection Facilities and Generating Facilities and coordinate with Transmission Owner's relay, protection, control and communication systems.

TRANSMISSION OWNER INTERCONNECTION FACILITIES AND NON-SHARED NETWORK UPGRADE(S)

To facilitate interconnection, the interconnecting Transmission Owner will perform work as shown below necessary for the acceptance of the Interconnection Customer’s Interconnection Facilities.

Table 1 and **Table 2** lists the Interconnection Customer’s estimated cost responsibility for Transmission Owner Interconnection Facilities (TOIF) and Non-Shared Network Upgrade(s) and provides an estimated lead time for completion of construction. The estimated lead time begins when the Generator Interconnection Agreement has been fully executed.

Table 1: Transmission Owner Interconnection Facilities (TOIF)

| Transmission Owner Interconnection Facilities (TOIF) | Total Cost Estimate (\$) | Allocated Percent (%) | Allocated Cost Estimate (\$) | Estimated Lead Time |
|--|---------------------------------|------------------------------|-------------------------------------|----------------------------|
| <u>Woodring 345kV GEN-2017-164 Interconnection (TOIF) (OGE) (143425):</u> Interconnection upgrades and cost estimates needed to interconnect the following Interconnection Customer facility, GEN-2017-164 (250 MW/Solar), into the Point of Interconnection (POI) at Woodring 345kV | \$795,827 | 100% | \$795,827 | 20 Months |
| Total | \$795,827 | | \$795,827 | |

Table 2: Non-Shared Network Upgrade(s)

| Non-Shared Network Upgrades Description | ILTCR | Total Cost Estimate (\$) | Allocated Percent (%) | Allocated Cost Estimate (\$) | Estimated Lead Time |
|--|--------------|---------------------------------|------------------------------|-------------------------------------|----------------------------|
| <u>NA</u> | NA | NA | NA | NA | NA |
| Total | | NA | | NA | |

SHARED NETWORK UPGRADE(S)

The Interconnection Customer’s share of costs for Shared Network Upgrades is estimated in **Table 3** below.

Table 3: Interconnection Customer Shared Network Upgrade(s)

| Shared Network Upgrades Description | ILTCR | Total Cost Estimate (\$) | Allocated Percent (%) | Allocated Cost Estimate (\$) | Estimated Lead Time |
|--|--------------|---------------------------------|------------------------------|-------------------------------------|----------------------------|
| <u>Renfrow 345 kV Terminal Equipment Upgrade (DISIS-2017-002) (OGE)(156445):</u> <u>Upgrade terminal equipment at point of change (OK/KS State Line) to accept Viola 345 kV line rebuild to achieve minimum summer/emergency rating of 1195 MVA.</u> | Eligible | \$250,000 | 13.04% | \$32,610.93 | 36 Months |
| <u>Viola to Renfrow 345 kV Rebuild (WERE) (DISIS-2017-002) (156471):</u> <u>Rebuild the existing Viola to Renfrow 345 kV line from Viola to the OK/KS State Line (23 miles) to achieve a minimum summer/emergency rating of 1195 MVA</u> | Eligible | \$47,418,633 | 13.04% | \$6,185,463.08 | 36 Months |
| <u>Woodring 345kV Interconnection Expansion (DISIS-2017-002)(143424):</u> <u>Expand the Woodring 345kV substation to accommodate the interconnection of GEN-2017-164 and GEN-2017-178</u> | Eligible | \$1,790,448 | 82.78% | \$1,482,158.94 | 20 Months |
| Total | | \$49,459,081.00 | | \$7,700,232.95 | |

All studies have been conducted assuming that higher-queued Interconnection Request(s) and the associated Network Upgrade(s) will be placed into service. If higher-queued Interconnection Request(s) withdraw from the queue, suspend or terminate service, the Interconnection Customer’s share of costs may be revised. Restudies, conducted at the customer’s expense, will determine the Interconnection Customer’s revised allocation of Shared Network Upgrades.

CONTINGENT NETWORK UPGRADE(S)

Certain Contingent Network Upgrades are **currently not the cost responsibility** of the Interconnection Customer but will be required for full Interconnection Service.

Table 4: Interconnection Customer Contingent Network Upgrade(s)

| Contingent Network Upgrade(s) Description | Current Cost Assignment | Estimated In-Service Date |
|---|-------------------------|---------------------------|
| <u>NA</u> | <u>NA</u> | <u>NA</u> |

Depending upon the status of higher- or equally-queued customers, the Interconnection Request’s in-service date is at risk of being delayed or Interconnection Service is at risk of being reduced until the in-service date of these Contingent Network Upgrades.

AFFECTED SYSTEM UPGRADE(S)

To facilitate interconnection, the Affected System Transmission Owner will be required to perform the facilities study work as shown below necessary for the acceptance of the Interconnection Customer’s Interconnection Facilities. **Table 5** displays the current impact study costs provided by either MISO or AECI as part of the Affected System Impact review. The Affected System facilities study could provide revised costs and will provide each Interconnection Customer’s allocation responsibilities for the upgrades.

Table 5: Interconnection Customer Affected System Upgrade(s)

| Affected System Upgrades Description | Total Cost Estimate (\$) | Allocated Percent (%) | Allocated Cost Estimate (\$) |
|---|---------------------------------|------------------------------|-------------------------------------|
| <u>NA</u> | NA | NA | NA |
| Total | NA | | NA |

CONCLUSION

After all Interconnection Facilities and Network Upgrades have been placed into service, Interconnection Service for MW can be granted. Full Interconnection Service will be delayed until the TOIF, Non-Shared NU, Shared NU, Contingent NU, Affected System Upgrades that are required for full interconnection service are completed. The Interconnection Customer’s estimated cost responsibility for full interconnection service is summarized in the table below.

Table 6: Cost Summary

| Description | Allocated Cost Estimate |
|--|-------------------------|
| Transmission Owner Interconnection Facilities Upgrade(s) | \$795,827 |
| Non-Shared Network Upgrade(s) | \$0 |
| Shared Network Upgrade(s) | \$7,700,232.95 |
| Affected System Upgrade(s) | \$0 |
| Total | \$8,496,059.95 |

Use the following link for Quarterly Updates on upgrades from this report: <https://spp.org/spp-documents-filings/?id=18641>

A draft Generator Interconnection Agreement will be provided to the Interconnection Customer consistent with the final results of this IFS report. The Transmission Owner and Interconnection Customer will have 60 days to negotiate the terms of the GIA consistent with the SPP Open Access Transmission Tariff (OATT).

APPENDICES

**A: TRANSMISSION OWNER'S INTERCONNECTION FACILITIES STUDY REPORT
AND NETWORK UPGRADES REPORT(S)**

See next page for the Transmission Owner's Interconnection Facilities Study Report and Network Upgrades Report(s).



Interconnection Facilities Study

Network Upgrades associated with DISIS-2017-002

March 2023

Introduction

This report summarizes the scope of the Interconnection Facilities Analysis for Network Upgrade(s) to determine costs related to the addition of the SPP-GI DISIS-2017-002 Interconnection Request(s).

Southwest Power Pool Generation Interconnection Request:

Per the SPP Generator Interconnection Procedures (GIP), SPP has requested that Evergy perform an Interconnection Facilities Study (IFS) for Network Upgrade(s) in accordance with the Scope of Interconnection Facilities Study GIP Section 8.10 and the Interconnection Facilities Study Procedures in accordance with GIP Section 8.11 for the following Interconnection Request(s):

| Upgrade Type | UID | Upgrade Name | DISIS Cost | DISIS Lead Time |
|---------------------|------------|---|-------------------|------------------------|
| Network Upgrade | 156516 | Archie 161 kV Terminal Upgrades (DISIS-2017-002) (EMW) | \$1,455,934 | 36 Months |
| Network Upgrade | 156851 | Archie – G17-108 Tap 161 kV Rebuild (DISIS-2017-002) (EMW) | \$41,157,960 | 36 Months |
| Network Upgrade | 156461 | Craig to Lenexa 161 kV Double Circuit Rebuild (DISIS-2017-002) (EM) | \$8,294,859 | 36 Months |
| Network Upgrade | 156457 | Post Oak 69-35 kV Transformer Replacement (DISIS-2017-002) (EKC) | \$2,470,058 | 36 Months |
| Network Upgrade | 156471 | Viola to G17-185 Tap 345 kV Line Rebuild (DISIS-2017-002) (EKC) | \$47,418,635 | 36 Months |

Archie 161 kV Terminal Upgrades 161

kV Substation

All terminal equipment to be replaced to meet a 2000 Amp rating. This will require a main bus rebuild to 4" aluminum pipe bus and includes bus side disconnects for the other three line terminals.

Total Cost

The total cost estimate for this Network Upgrade is:

| | | |
|----|-----------|-------------------------|
| \$ | 0 | 161kV Transmission Line |
| \$ | 1,451,579 | 161kV Substation |
| \$ | 4,354 | AFUDC |
| \$ | 0 | Contingency |
| \$ | 1,455,934 | Total |

This estimate is accurate to +/- twenty (20) percent, based on current prices, in accordance with Attachment A of Appendix 4 of the Interconnection Facilities Study Agreement.

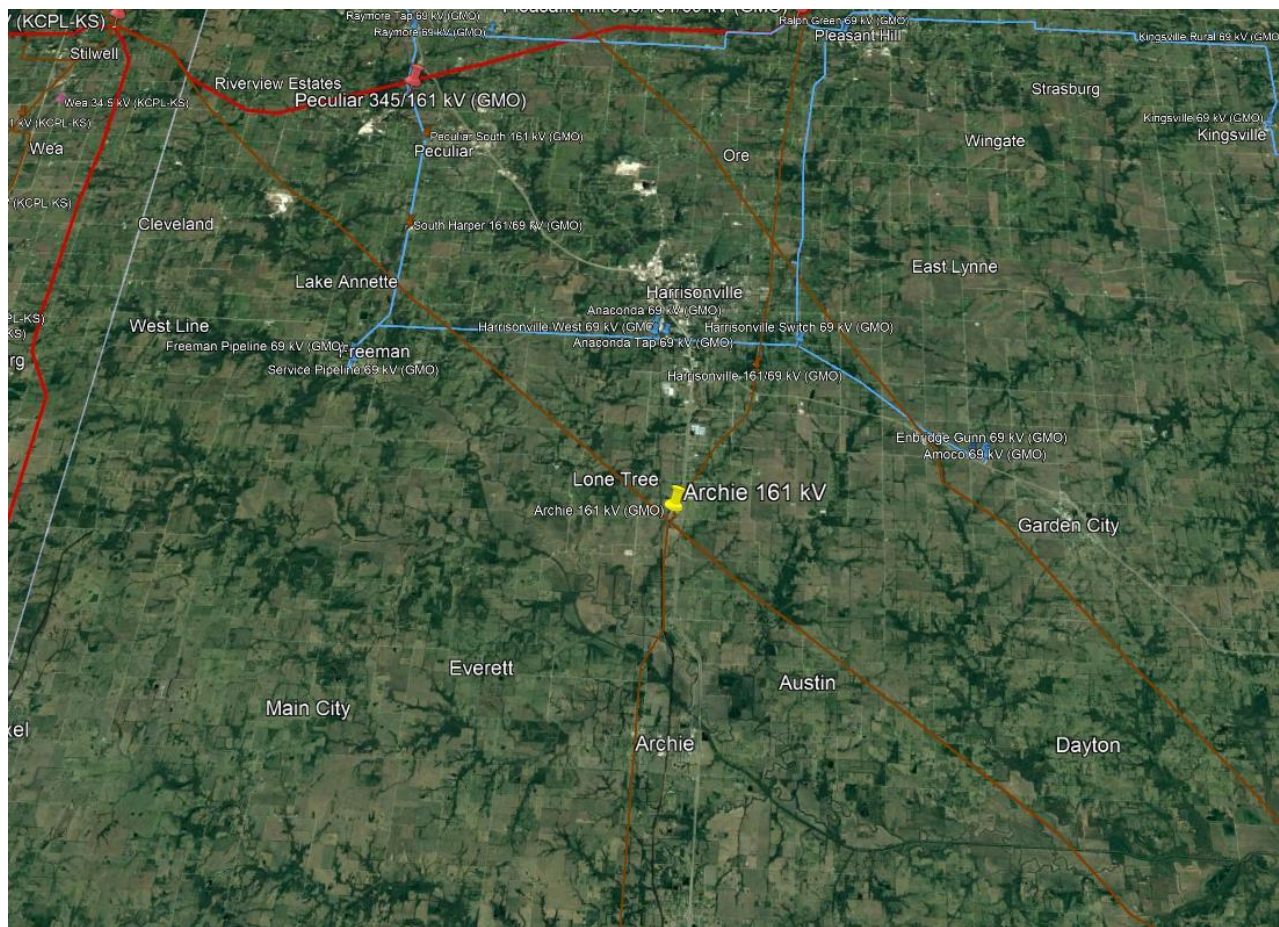
However, recent cost fluctuations in materials are very significant and the accuracy of this estimate at the time of actual settings cannot be assured.

Time Estimate

Time estimates are based on current version of the project schedule and some processes of each category run concurrently.

| | | |
|-----------------------------|--------------|---------------|
| Engineering Time | 12-18 | Months |
| Procurement Time | 12-18 | Months |
| Construction Time | 12 | Months |
| Total Project Length | 36-48 | Months |

Figure 1 – Archie 161 kV Sub



Archie – G17-108 Tap 161 kV Rebuild 161

kV Transmission Line

The estimated cost is for 28.73 miles of 161kV circuit. Line will be rebuilt using steel structures, with angles and dead-ends on drilled piers. Estimate assumes the conductor will be 1192 ACSS/TW and OPGW will be installed.

Total Cost

The total cost estimate for this Network Upgrade is:

| | | |
|-------|------------|--------------------------|
| \$ | 39,783,750 | 161 kV Transmission Line |
| \$ | 0 | 161 kV Substation |
| \$ | 1,374,210 | AFUDC |
| \$ | 0 | Contingency |
| <hr/> | | |
| \$ | 41,157,960 | Total |

This estimate is accurate to +/- twenty (20) percent, based on current prices, in accordance with Attachment A of Appendix 4 of the Interconnection Facilities Study Agreement.

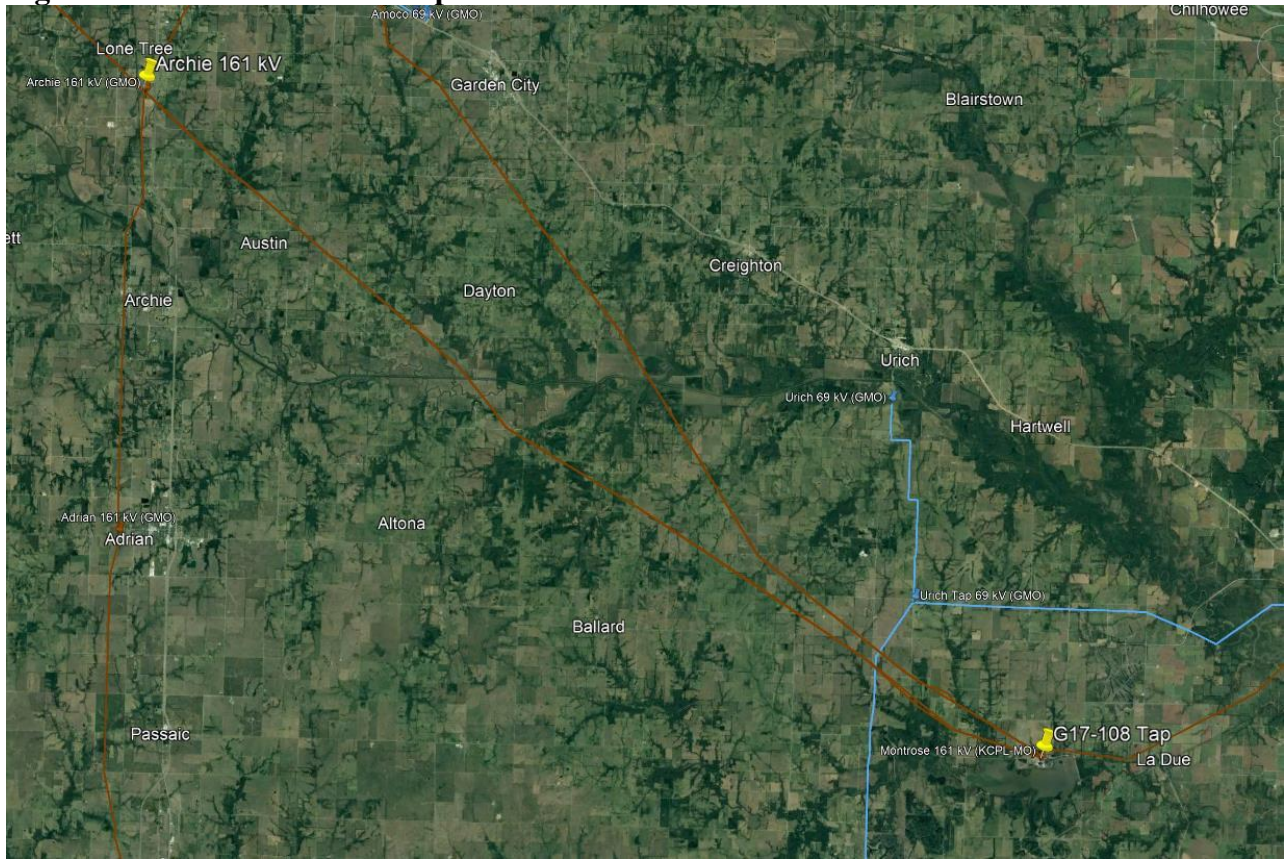
However, recent cost fluctuations in materials are very significant and the accuracy of this estimate at the time of actual settings cannot be assured.

Time Estimate

Time estimates are based on current version of the project schedule and some processes of each category run concurrently.

| | | |
|----------------------|-------|--------|
| Engineering Time | 12-18 | Months |
| Procurement Time | 12-18 | Months |
| Construction Time | 12 | Months |
| <hr/> | | |
| Total Project Length | 36-48 | Months |

Figure 2 – Archie – G17-108 Tap



Craig to Lenexa 161 kV Double Circuit Rebuild 161 kV

Transmission Line

The estimated cost is for 2.95 miles of 161kV double circuit. The lines will be rebuilt with steel structures, 1192 ACSS/TW conductor and two OPGW's designed to Evergy standards.

Total Cost

The total cost estimate for this Network Upgrade is:

| | | |
|-------|-----------|--------------------------|
| \$ | 7,763,088 | 161 kV Transmission Line |
| \$ | 0 | 161 kV Substation |
| \$ | 531,771 | AFUDC |
| \$ | 0 | Contingency |
| <hr/> | | |
| \$ | 8,294,859 | Total |

This estimate is accurate to +/- twenty (20) percent, based on current prices, in accordance with Attachment A of Appendix 4 of the Interconnection Facilities Study Agreement.

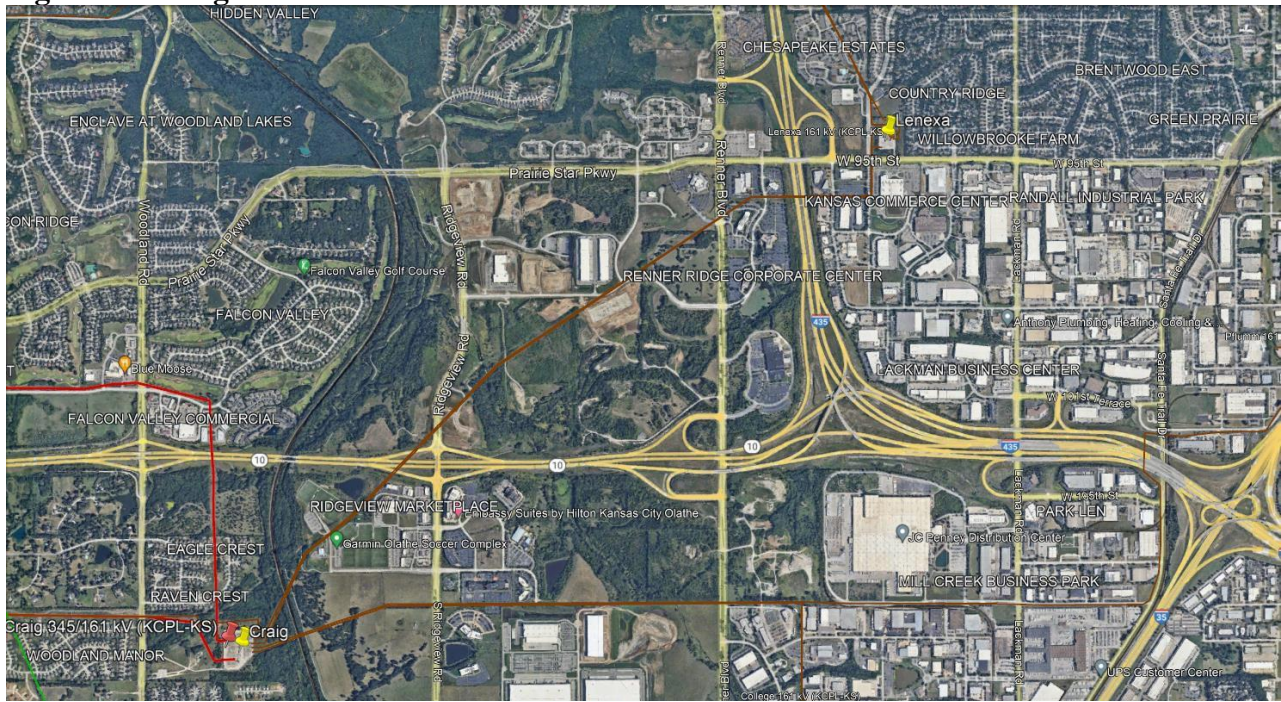
However, recent cost fluctuations in materials are very significant and the accuracy of this estimate at the time of actual settings cannot be assured.

Time Estimate

Time estimates are based on current version of the project schedule and some processes of each category run concurrently.

| | | |
|----------------------------|-------------|--------------|
| Engineering Time | 12-18 | Months |
| Procurement Time | 12-18 | Months |
| Construction Time | 12 | Months |
| <hr/> Total Project Length | <hr/> 36-48 | <hr/> Months |

Figure 3 – Craig – Lenexa 161kV Line



Post Oak 69-35 kV Transformer Replacement

69 kV Transformer

Replace Post Oak 69/35 kV Transformer with a 50MVA 69/34kV Transformer. This will also require a 34kV bank breaker, 34kV feeder breaker, box bay, RTU, control house and metering equipment.

Total Cost

The total cost estimate for this Network Upgrade is:

| | | |
|----|-----------|---------------------------------|
| \$ | 2,462,670 | 69 kV Substation Transformer |
| \$ | 7,388 | AFUDC |
| \$ | 0 | Contingency |
| \$ | 2,470,058 | Total |

This estimate is accurate to +/- twenty (20) percent, based on current prices, in accordance with Attachment A of Appendix 4 of the Interconnection Facilities Study Agreement. However, recent cost fluctuations in materials are very significant and the accuracy of this estimate at the time of actual settings cannot be assured.

Time Estimate

Time estimates are based on current version of the project schedule and some processes of each category run concurrently.

| | | |
|----------------------|-------|--------|
| Engineering Time | 12-18 | Months |
| Procurement Time | 12-18 | Months |
| Construction Time | 12 | Months |
| Total Project Length | 36-48 | Months |

Figure 4 – Post Oak – 69kV Transformer



Viola – Renfrow 345 kV Rebuild (Evergy Portion)

345 kV Transmission Line

The estimated cost is for the rebuild of the 23-mile Evergy portion of the Viola – Renfrow 345kV line to meet a 3000 Amp line rating. Line will be rebuilt using steel structures, with angles and dead-ends on drilled piers. Estimate assumes the conductor will be 1590 Lapwing ACSR and OPGW will be installed.

Total Cost

The total cost estimate for this Network Upgrade is:

| | | |
|----|------------|--------------------------|
| \$ | 47,276,805 | 345 kV Transmission Line |
| \$ | 0 | 345 kV Substation |
| \$ | 141,830 | AFUDC |
| \$ | 0 | Contingency |
| \$ | 47,418,635 | Total |

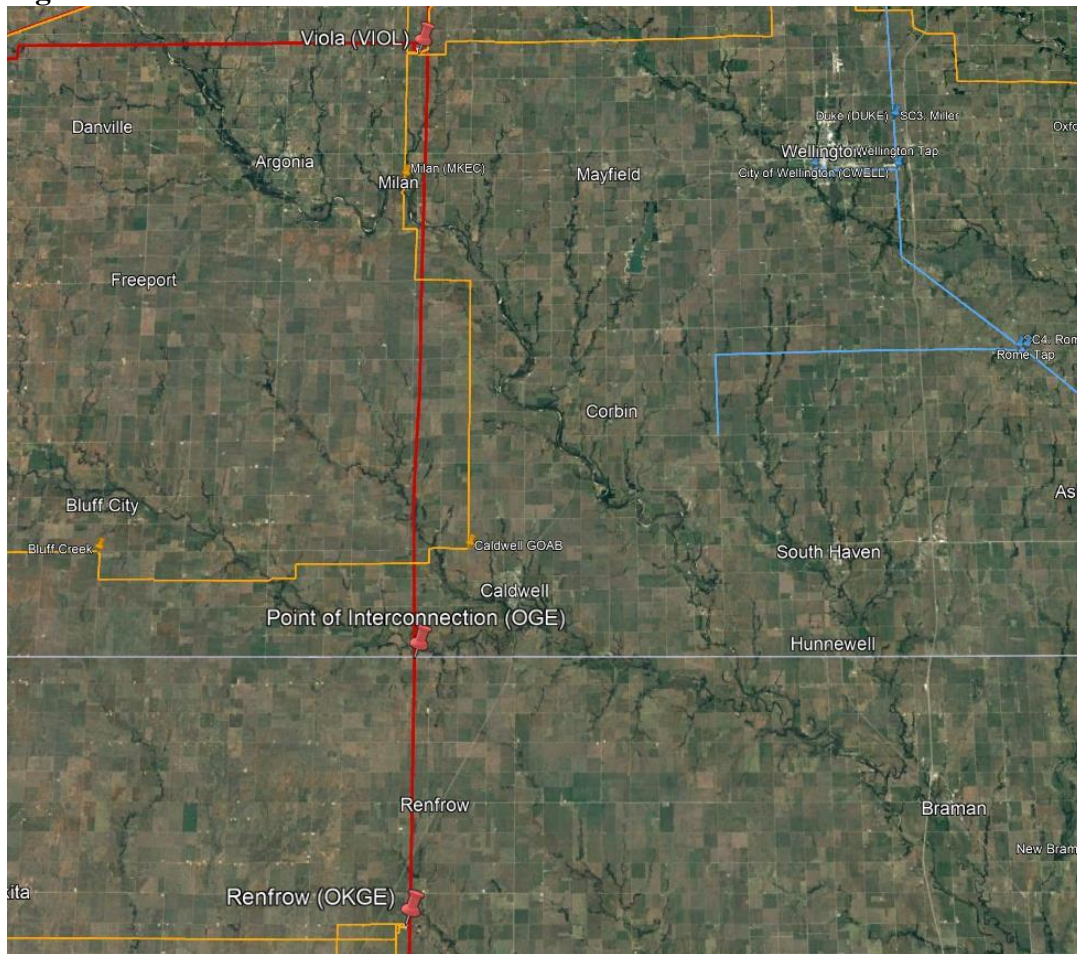
This estimate is accurate to +/- twenty (20) percent, based on current prices, in accordance with Attachment A of Appendix 4 of the Interconnection Facilities Study Agreement. However, recent cost fluctuations in materials are very significant and the accuracy of this estimate at the time of actual settings cannot be assured.

Time Estimate

Time estimates are based on current version of the project schedule and some processes of each category run concurrently.

| | | |
|-----------------------------|--------------|---------------|
| Engineering Time | 12-18 | Months |
| Procurement Time | 12-18 | Months |
| Construction Time | 12 | Months |
| Total Project Length | 36-48 | Months |

Figure 5 – Viola – Renfrow 345 kV





FACILITY STUDY

for

Generation Interconnection Request 2017-164

250 MW Solar Generating Facility
In Alfalfa County
Oklahoma

February 28, 2023

Benjamin Sasu
Senior Engineer
Transmission Planning
OG&E Electric Services

Summary

Pursuant to the tariff and at the request of the Southwest Power Pool (SPP), Oklahoma Gas and Electric (OG&E) performed the following Facility Study to satisfy the Facility Study Agreement executed by the requesting customer for SPP Generation Interconnection request Gen-2017-164. The request for interconnection was placed with SPP in accordance SPP's Open Access Transmission Tariff, which covers new generation interconnections on SPP's transmission system. The requirements for interconnection consist of adding a breaker and a new line terminal for a new Solar Farm at Woodring 345kV Substation to be established by this GIA request as well as Gen-2017-178. Since these two requests will share the same Gen-tie line and are a part of the same DISIS study group, costs for the total project will be divided equally among the two projects. If one GIA request is withdrawn or delayed for whatever reason, the GIA request that moves forward will be assumed to cover the remaining costs of the project. The total cost for OKGE to add a breaker, and a new line terminal for a new Solar Farm at Woodring 345kV substation, the interconnection facility, is estimated at \$3,382,102.

Table of Contents

| | |
|-------------------------------------|---|
| Table of Contents | 3 |
| Introduction | 4 |
| Interconnection Facilities | 5 |
| Interconnection Costs | 6 |
| One-Line diagram of Interconnection | 7 |

Introduction

The Southwest Power Pool has requested a Facility Study for the purpose of interconnecting a Solar generating facility within the service territory of OG&E Electric Services (OKGE) in Alfalfa County Oklahoma. The proposed 345kV point of interconnection is at Woodring Substation in Garfield County. This substation is owned by OKGE. The cost for adding a new 345kV terminal to Woodring Substation, the required interconnection facility, is estimated at \$1,591,654.

Network Constraints in the Southwest Public Service (SPS), OKGE and Western Farmers Electric Cooperative (WFEC) systems may be verified with a transmission service request and associated studies.

Other Network Constraints in the American Electric Power West (AEPW), Southwest Public Service (SPS), OKGE and Western Farmers Electric Cooperative (WFEC) systems may be verified with a transmission service request and associated studies.

Interconnection Facilities

The primary objective of this study is to identify attachment facilities. The requirements for interconnection consist of adding a new 345kV terminal at Woodring substation. This 345kV addition shall be constructed and maintained by OKGE. It is assumed that obtaining all necessary right-of-way for the line into the existing OKGE 345kV substation facilities will be performed by the interconnection customer.

The total cost for OKGE to add a new 345kV terminal into Woodring substation, the interconnection facility, is estimated at \$3,382,102. This cost does not include building the 345kV line from the Customer substation into Woodring Substation. The Customer is responsible for this 345kV line up to the point of interconnection. This cost does not include the Customer's 345-34.5kV substation and the cost estimate should be determined by the Customer.

This Facility Study does not guarantee the availability of transmission service necessary to deliver the additional generation to any specific point inside or outside the Southwest Power Pool (SPP) transmission system. The transmission network facilities may not be adequate to deliver the additional generation output to the transmission system. If the customer requests firm transmission service under the SPP Open Access Transmission Tariff at a future date, Network Upgrades or other new construction may be required to provide the service requested under the SPP OATT.

The costs of interconnecting the facility to the OKGE transmission system are listed in Table 1.

Short Circuit Fault Duty Evaluation

It is standard practice for OG&E to recommend replacing a circuit breaker when the current through the breaker for a fault exceeds 100% of its interrupting rating with re-closer de-rating applied, as determined by the ANSI/IEEE C37.5-1979, C37.010-1979 & C37.04-1979 breaker rating methods.

For this generator interconnection, no breakers were found to exceed their interrupting capability after the addition of the Customer’s 250MW generation and related facilities. OG&E found no breakers that exceeded their interrupting capabilities on their system. Therefore, there is no short circuit upgrade costs associated with the Gen-2017-164.

Table 1: Required Interconnection Network Upgrade Facilities

| Facility | ESTIMATED COST (2023 DOLLARS) Cost to be shared among Gen-2017-164 and Gen- 2017-178 | Percentage Responsible |
|---|--|------------------------|
| Lead Time | 20 Months | |
| OKGE – Interconnection Facilities - Add one 345kV line terminal to Woodring Substation. one dead end structure, line switch, line relaying, revenue metering including CTs and PTs | \$1,591,654 | 50% |
| OKGE – Network Upgrades at Woodring sub, install one-345kV 3000A breaker, line relaying, disconnect switches, and associated equipment. | \$1,790,448 | 50% |
| OKGE - Right-of-Way for 345kV terminal addition | No Additional ROW | |
| Total Cost for Gen-2017-164 | \$1,691,051 | |

Prepared by Benjamin Sasu
Senior Engineer, Transmission Planning
OG&E Electric Services

February 28, 2023

Reviewed by:
Adam Snap, P.E.
Manager, Transmission Planning

